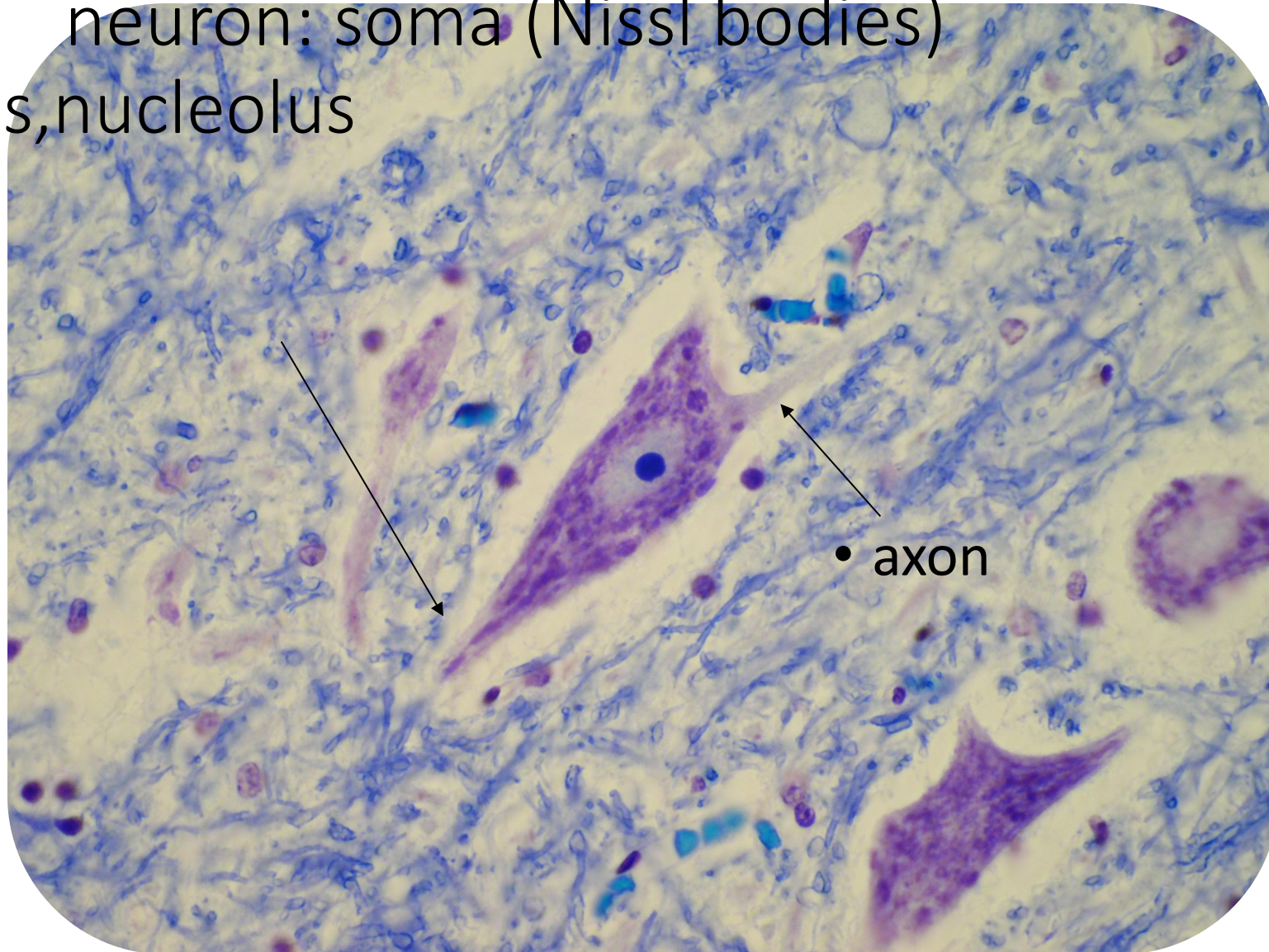


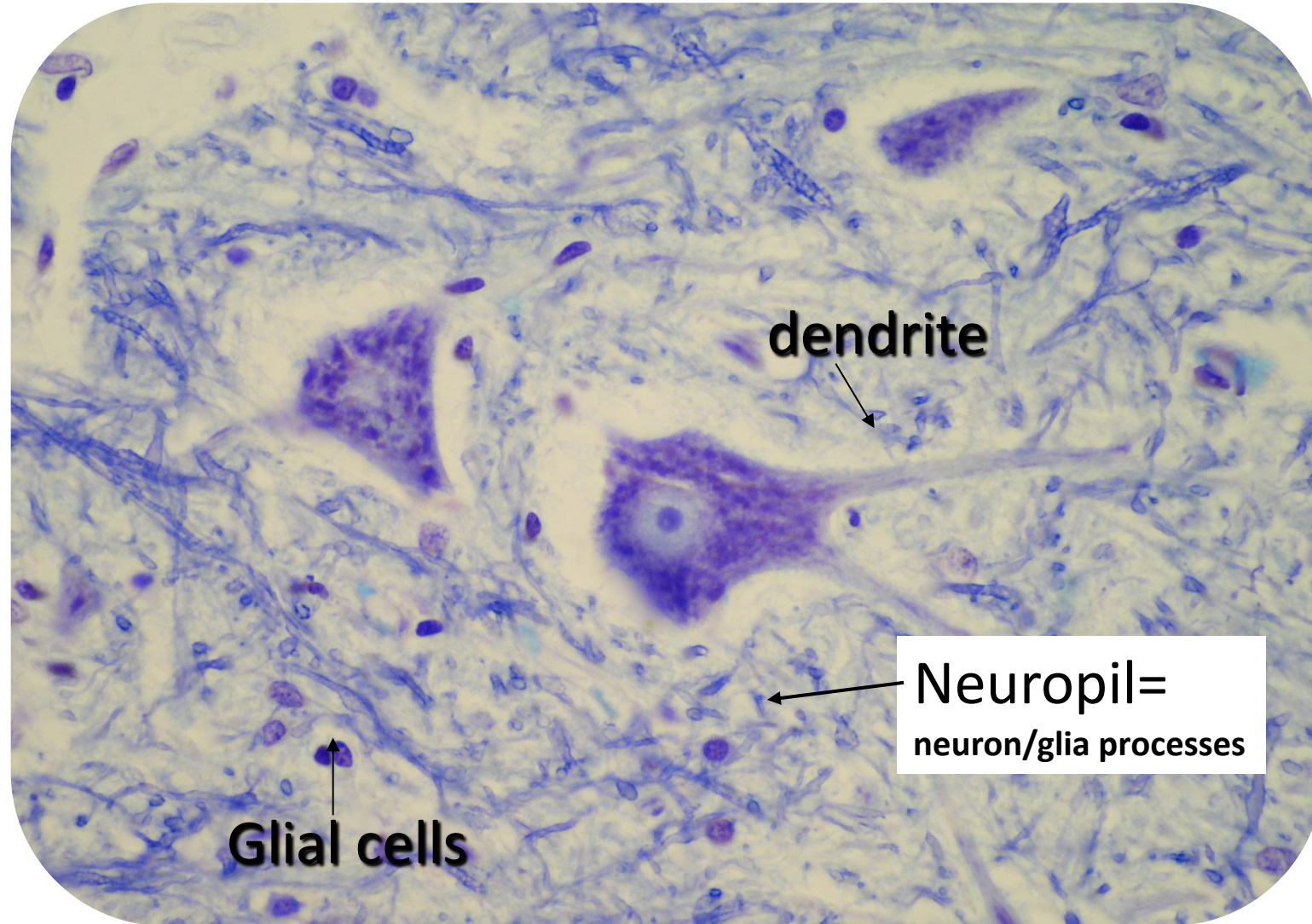
Nervous tissue



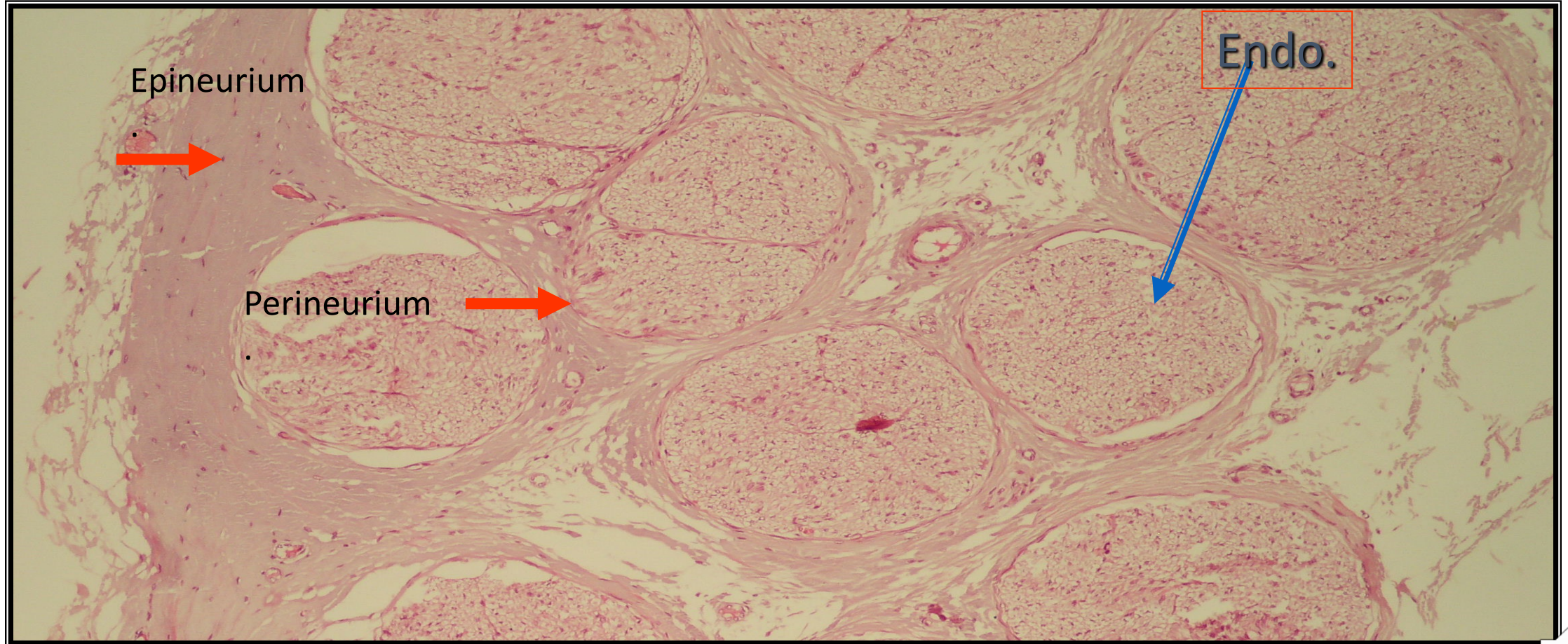
neuron: soma (Nissl bodies)
nucleus, nucleolus

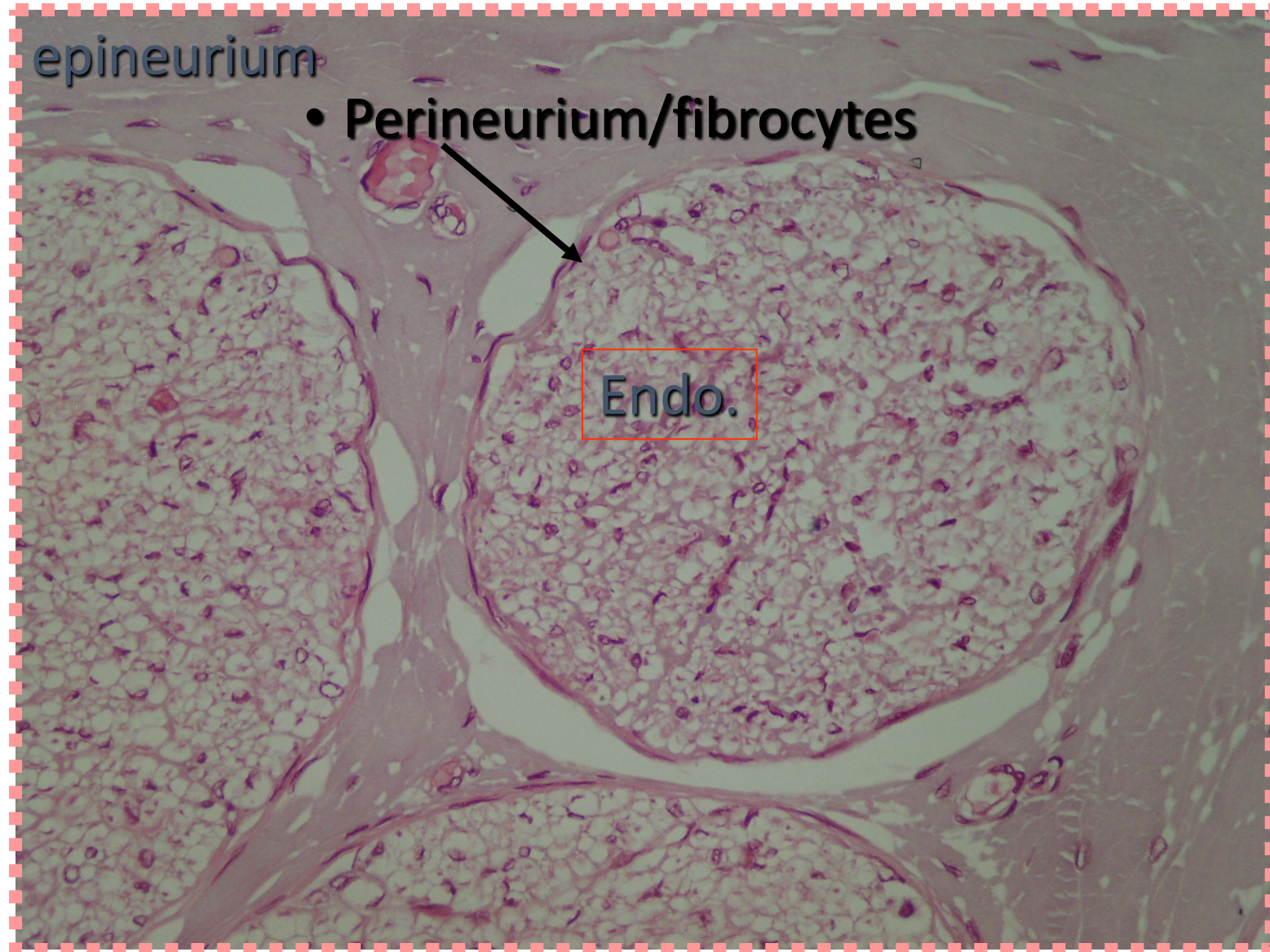


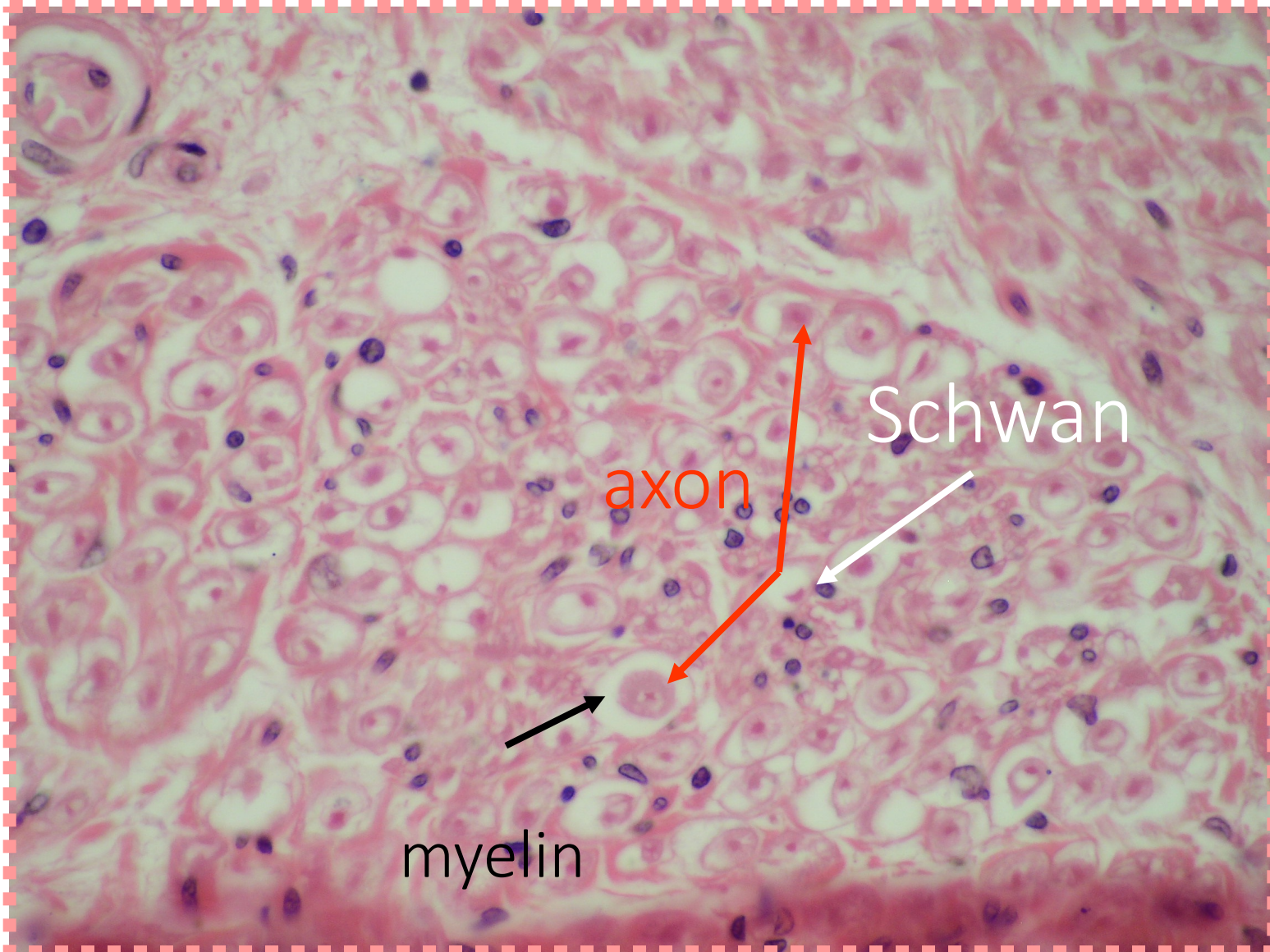
multipolar neuron (toluidine blue stain)



H&E- Fascicles of nerve fibers





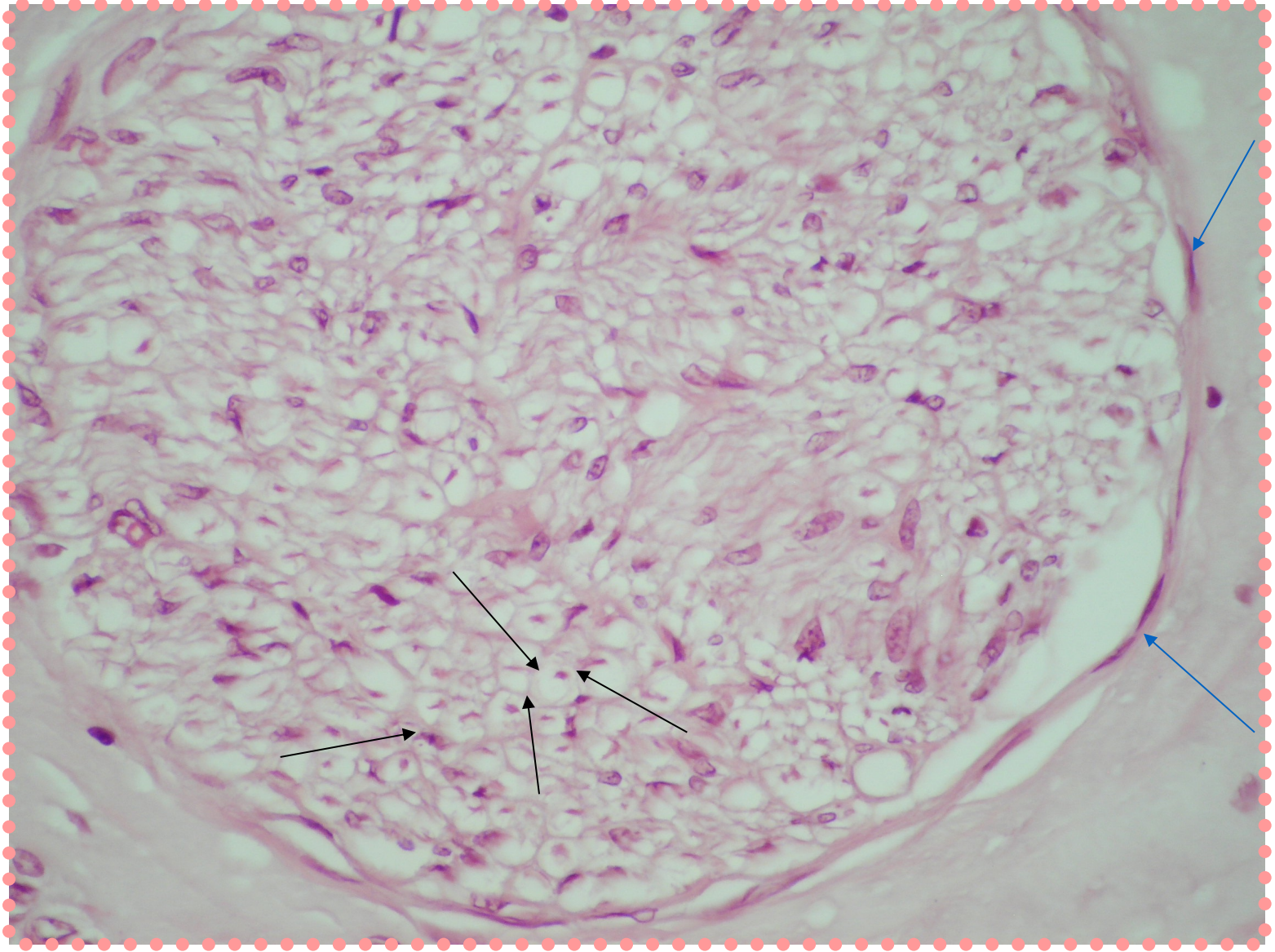


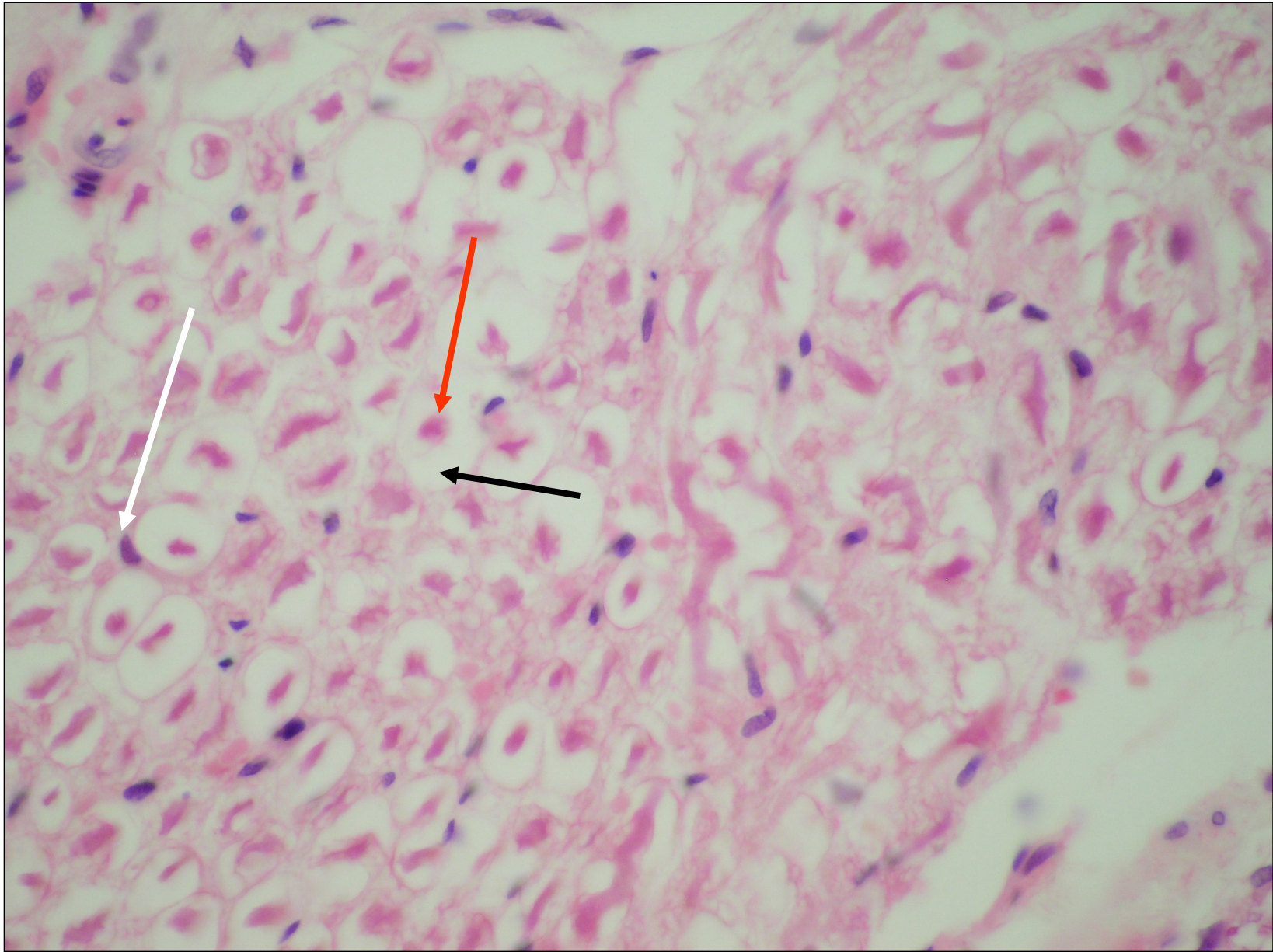
myelin

axon

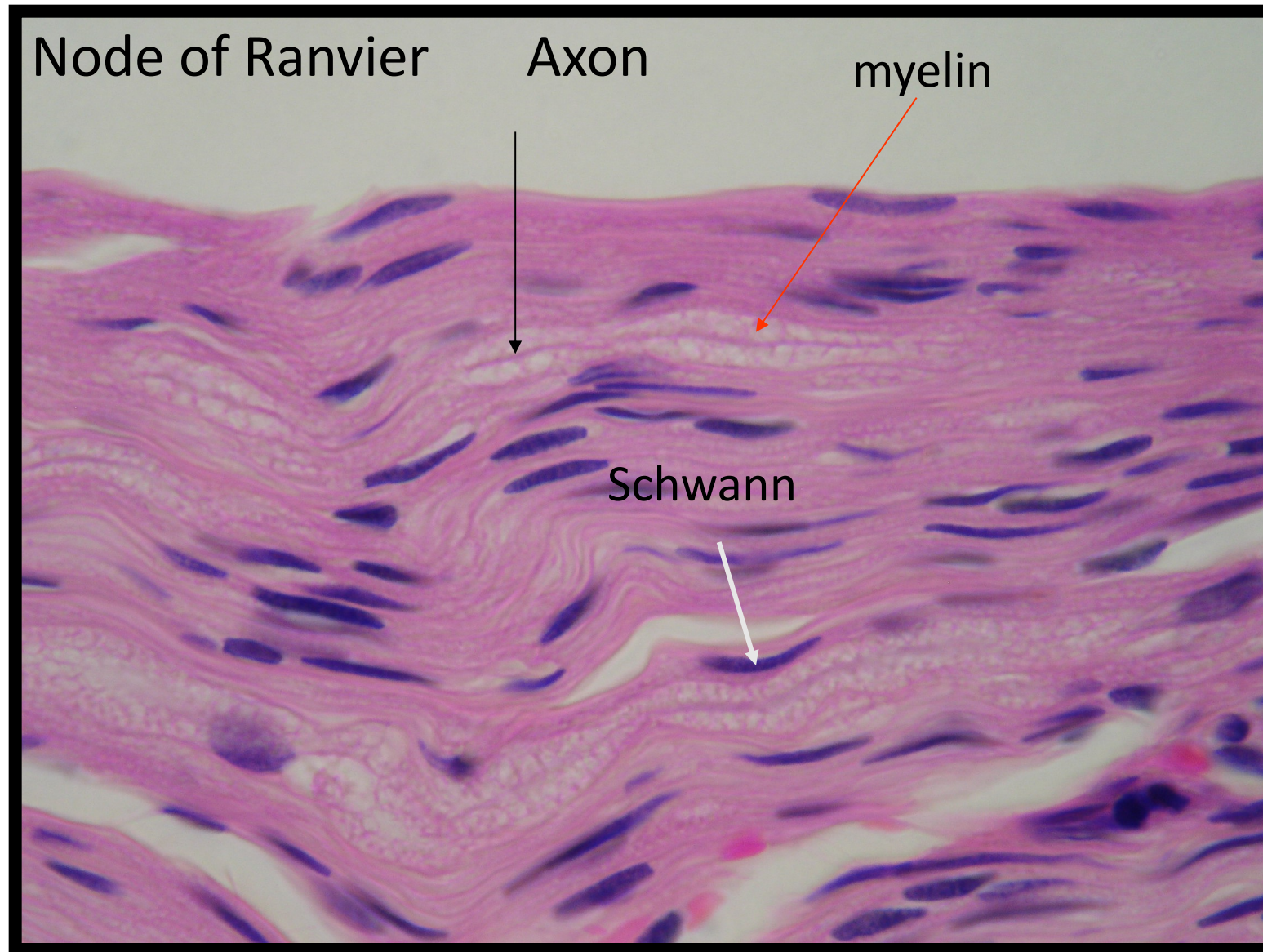
Schwan



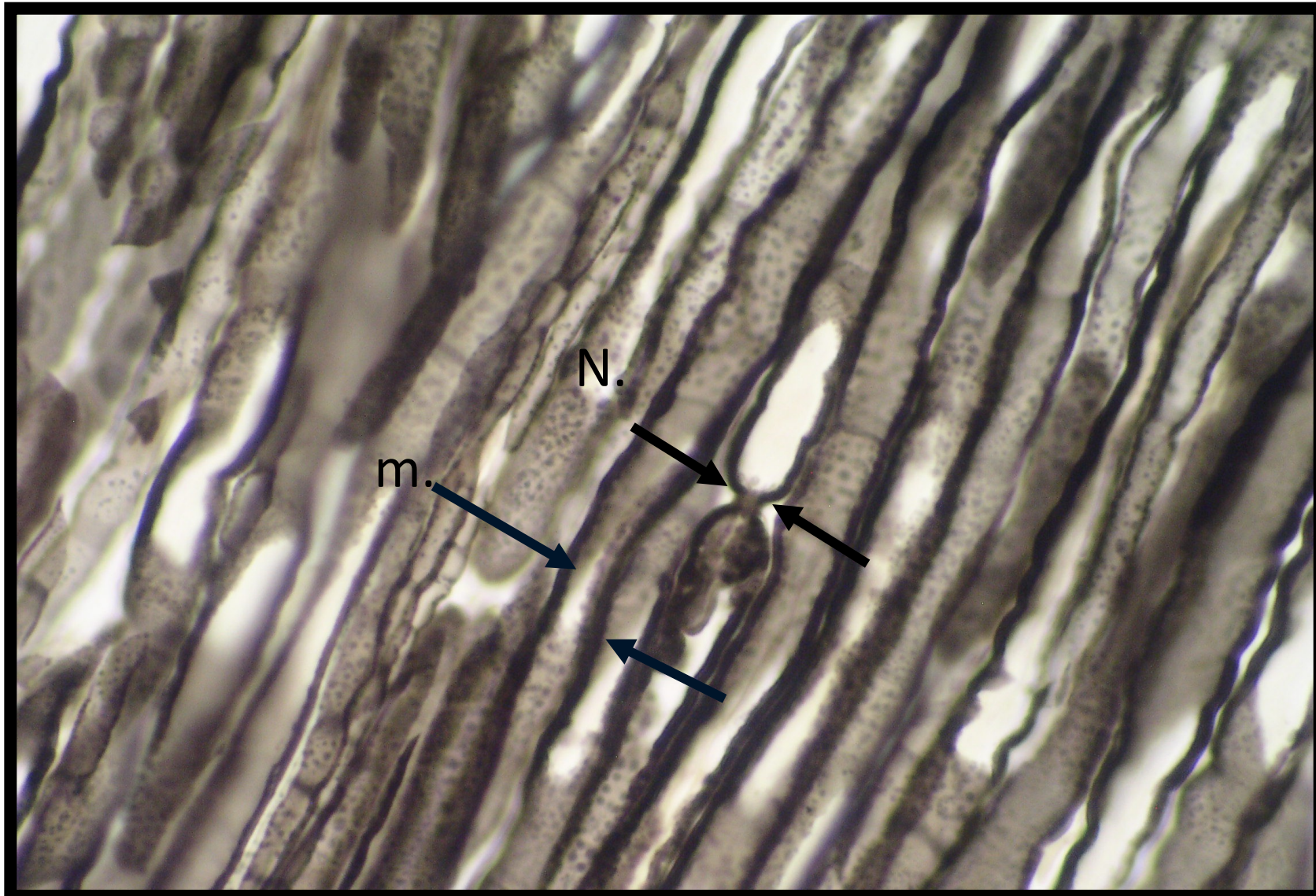




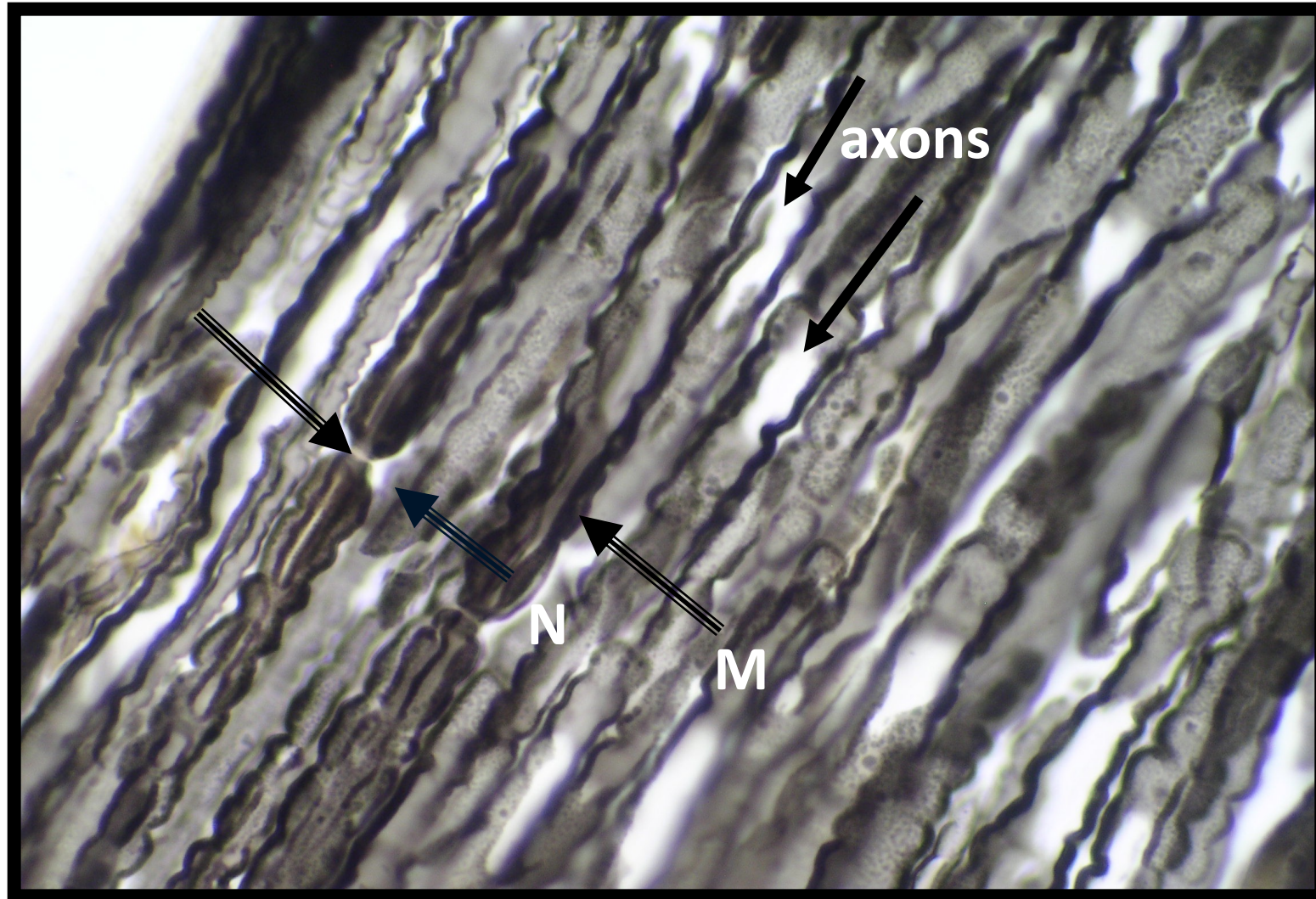
L.S. in nerve fibers



L.S. in nerve fibers (osmium tetroxide) myelin- Node of Ranvier

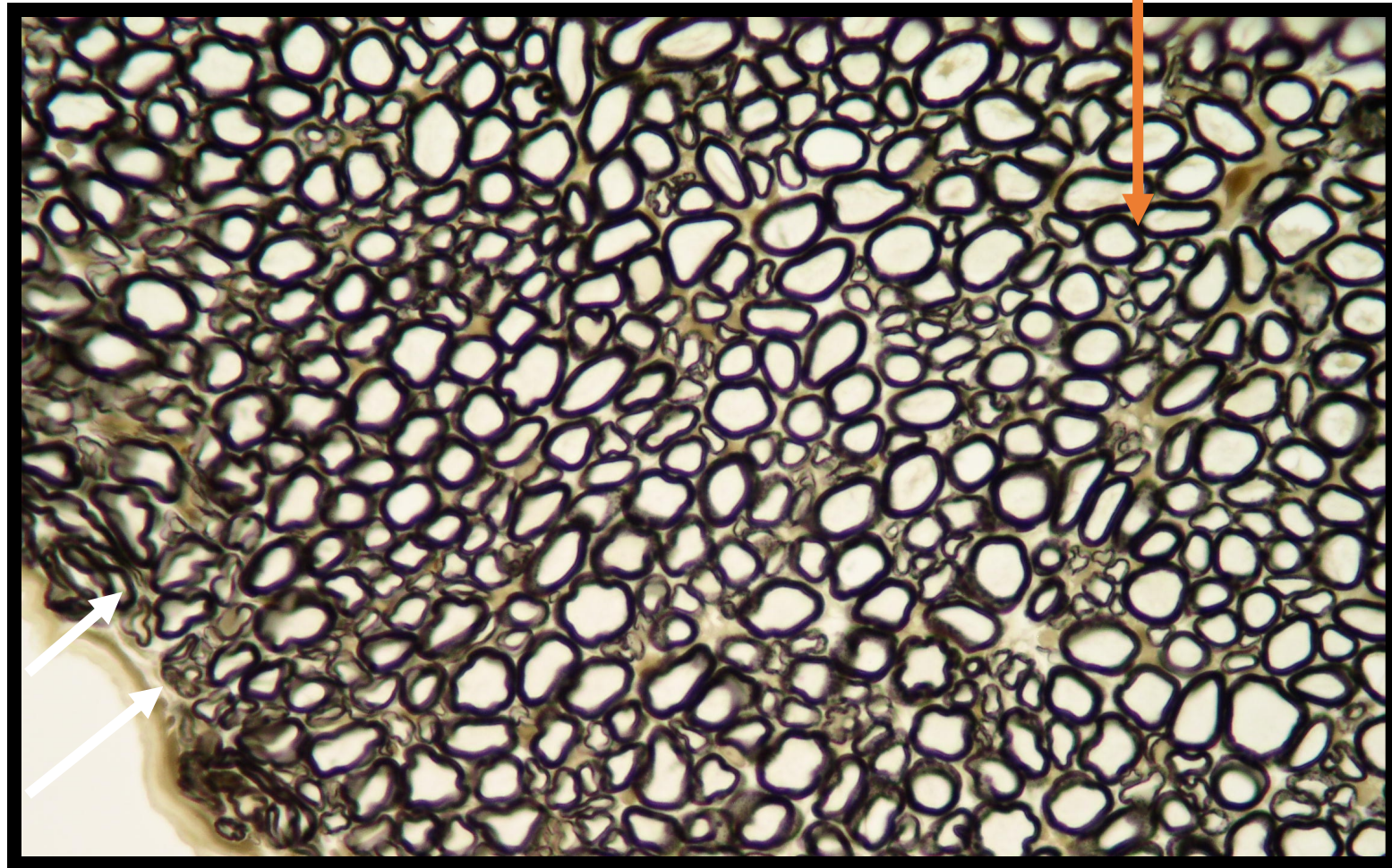


Axon cylinder



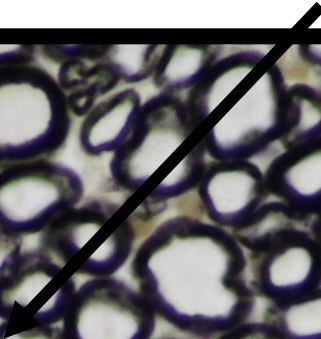
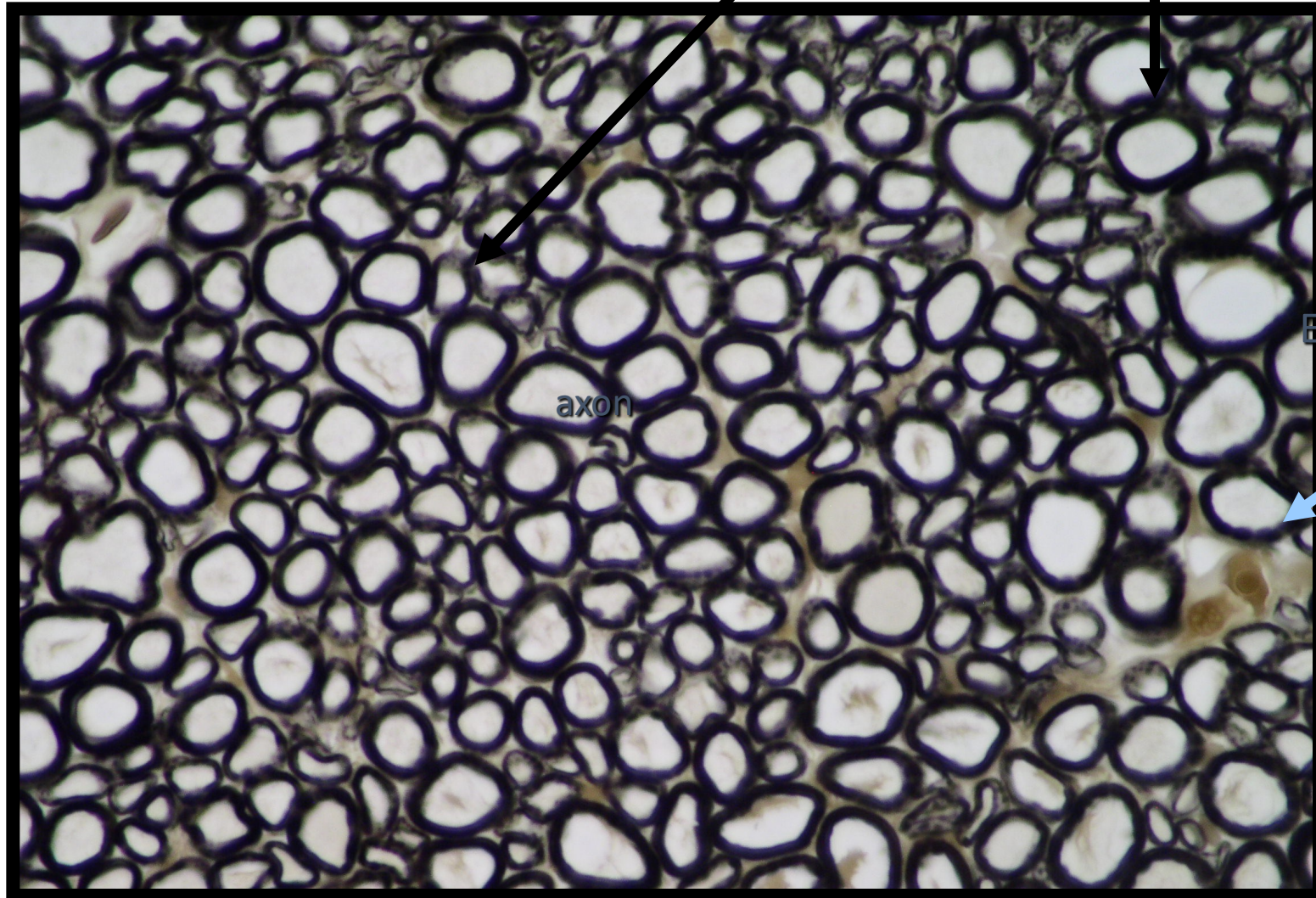
T.s.in nerve fibers

endoneurium perineurium



myelin

axon

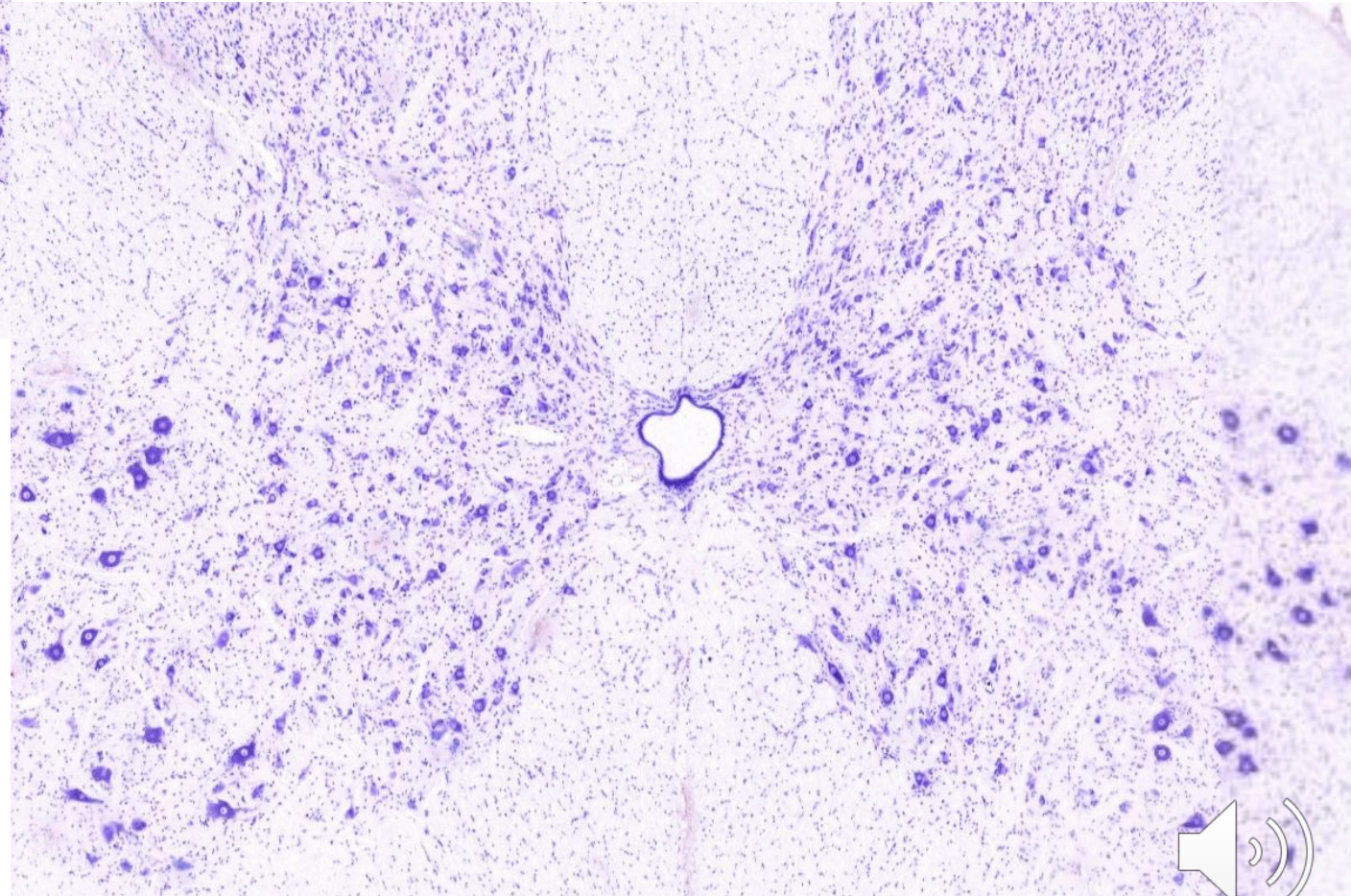
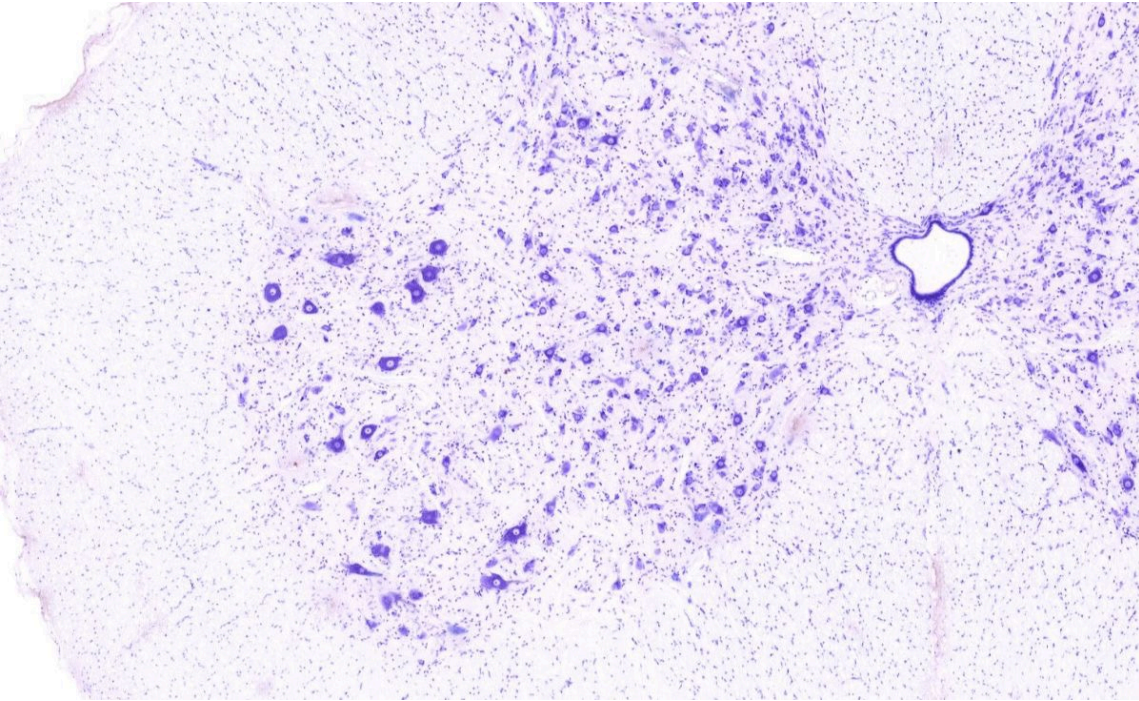


axon

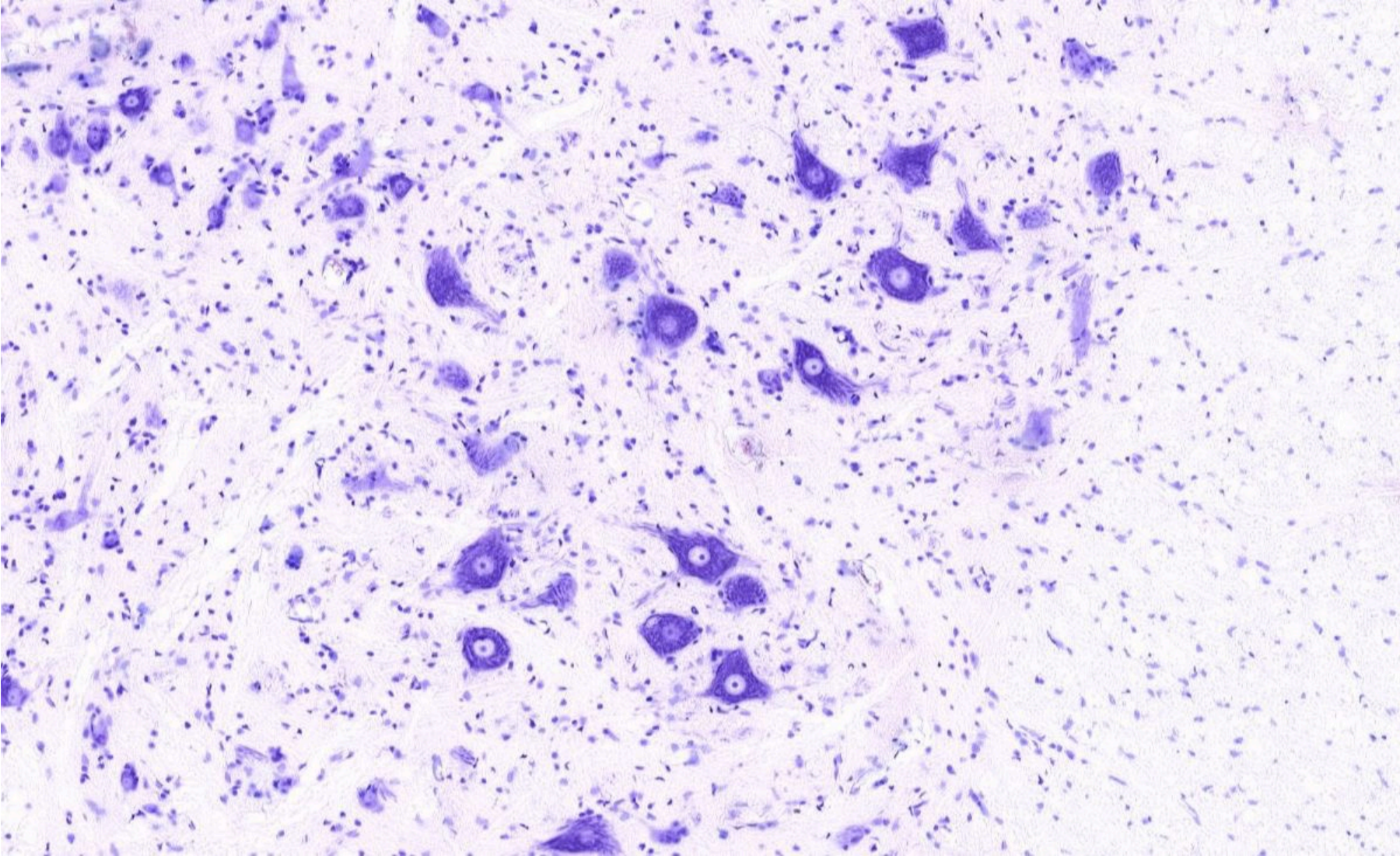
Endo-neurium



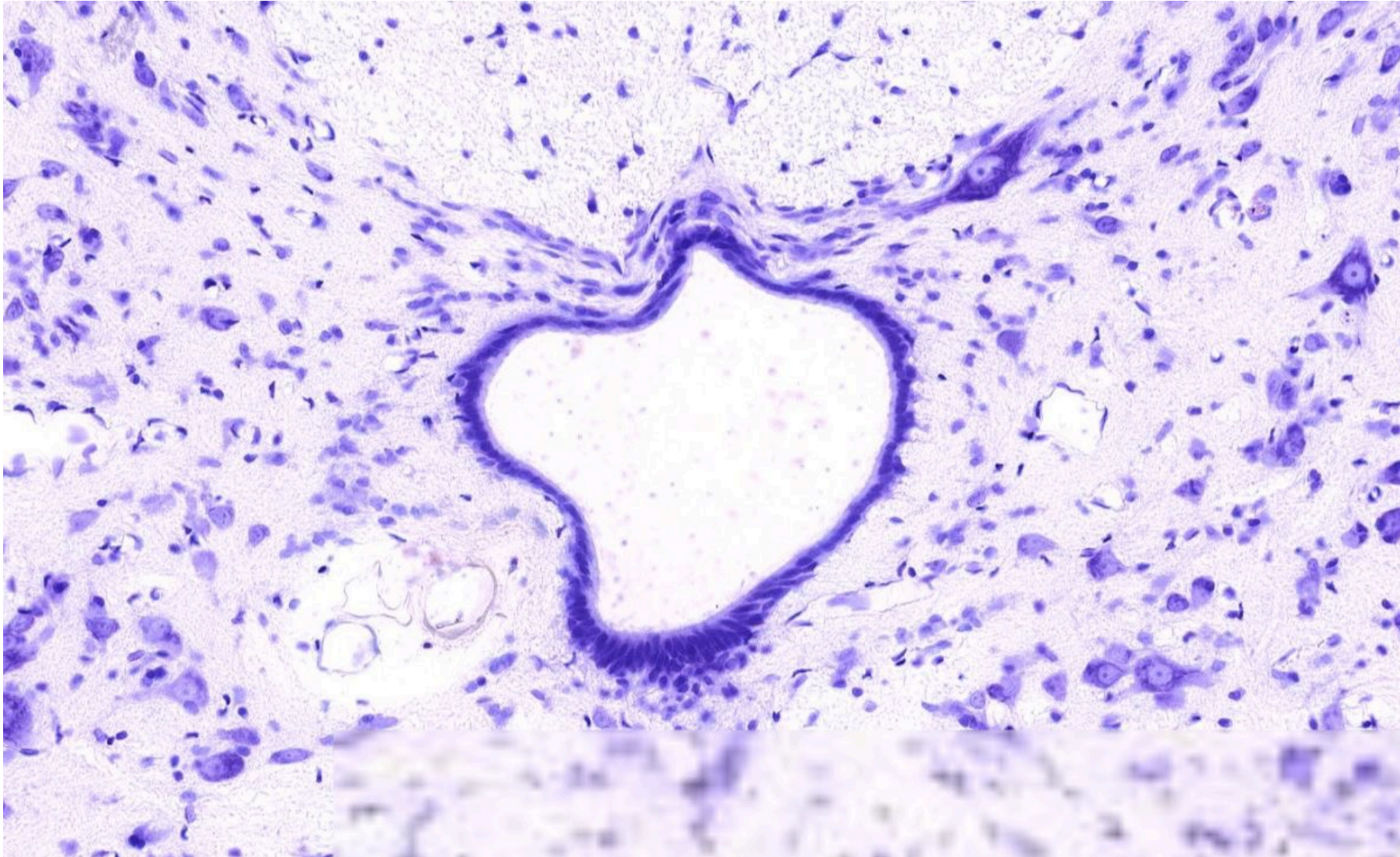
Spinal cord



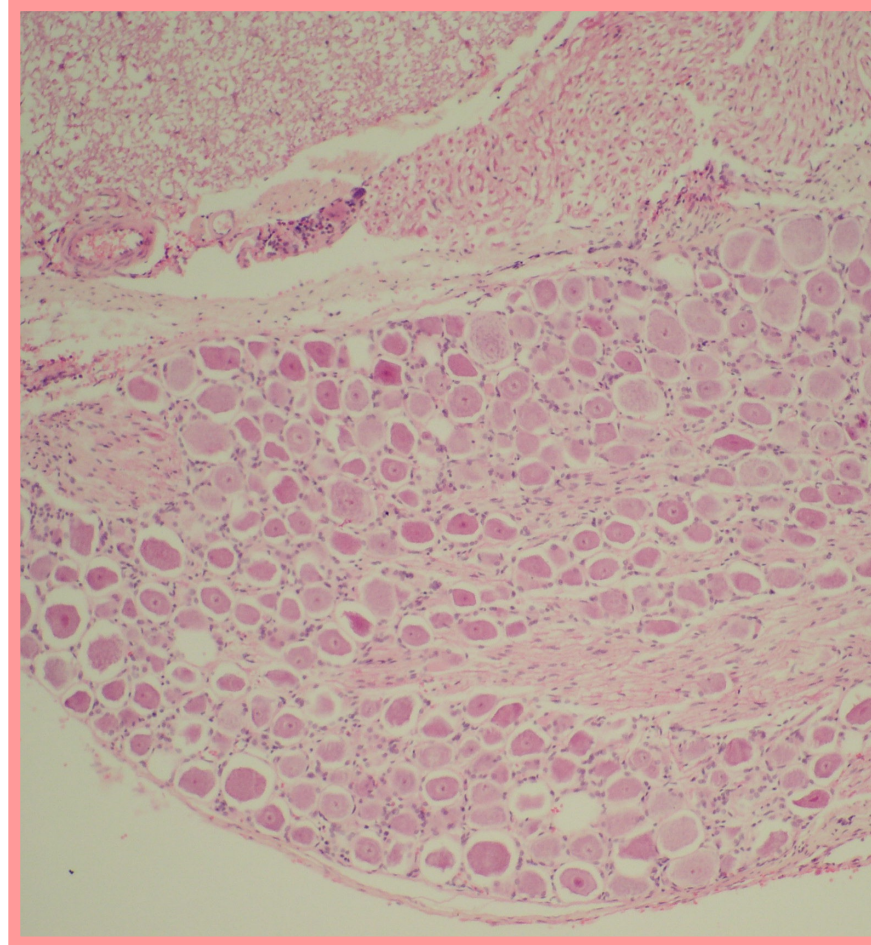
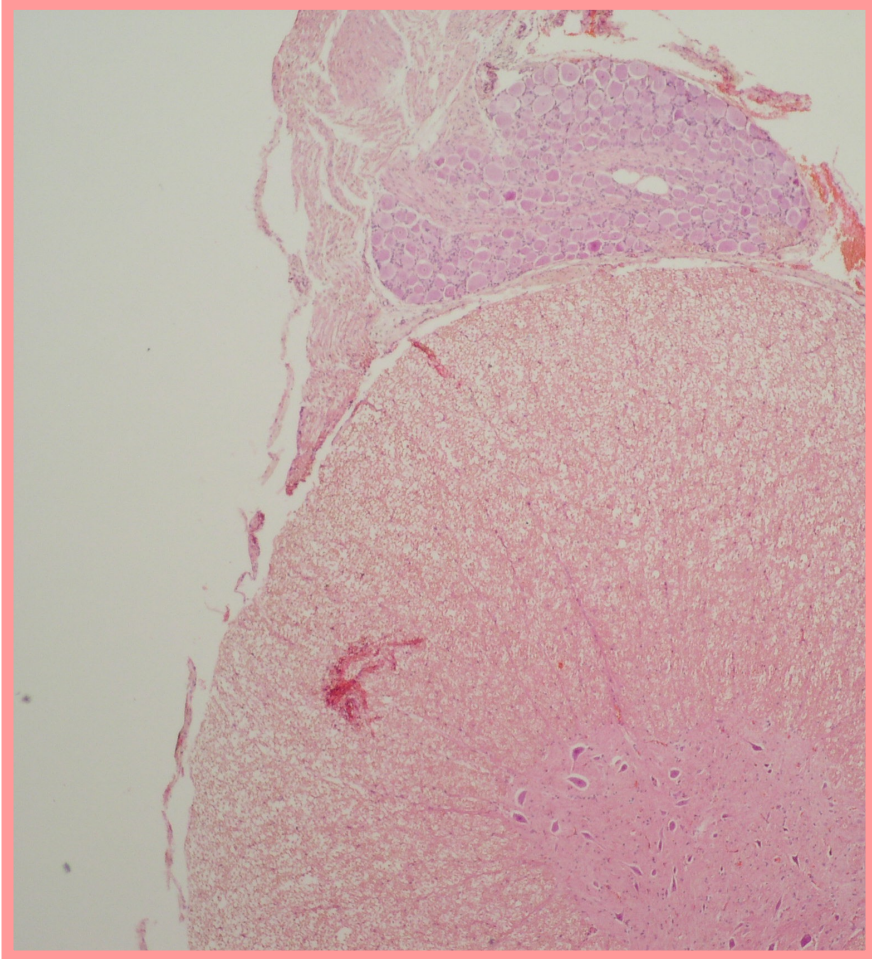
Anterior horns-spinal cord



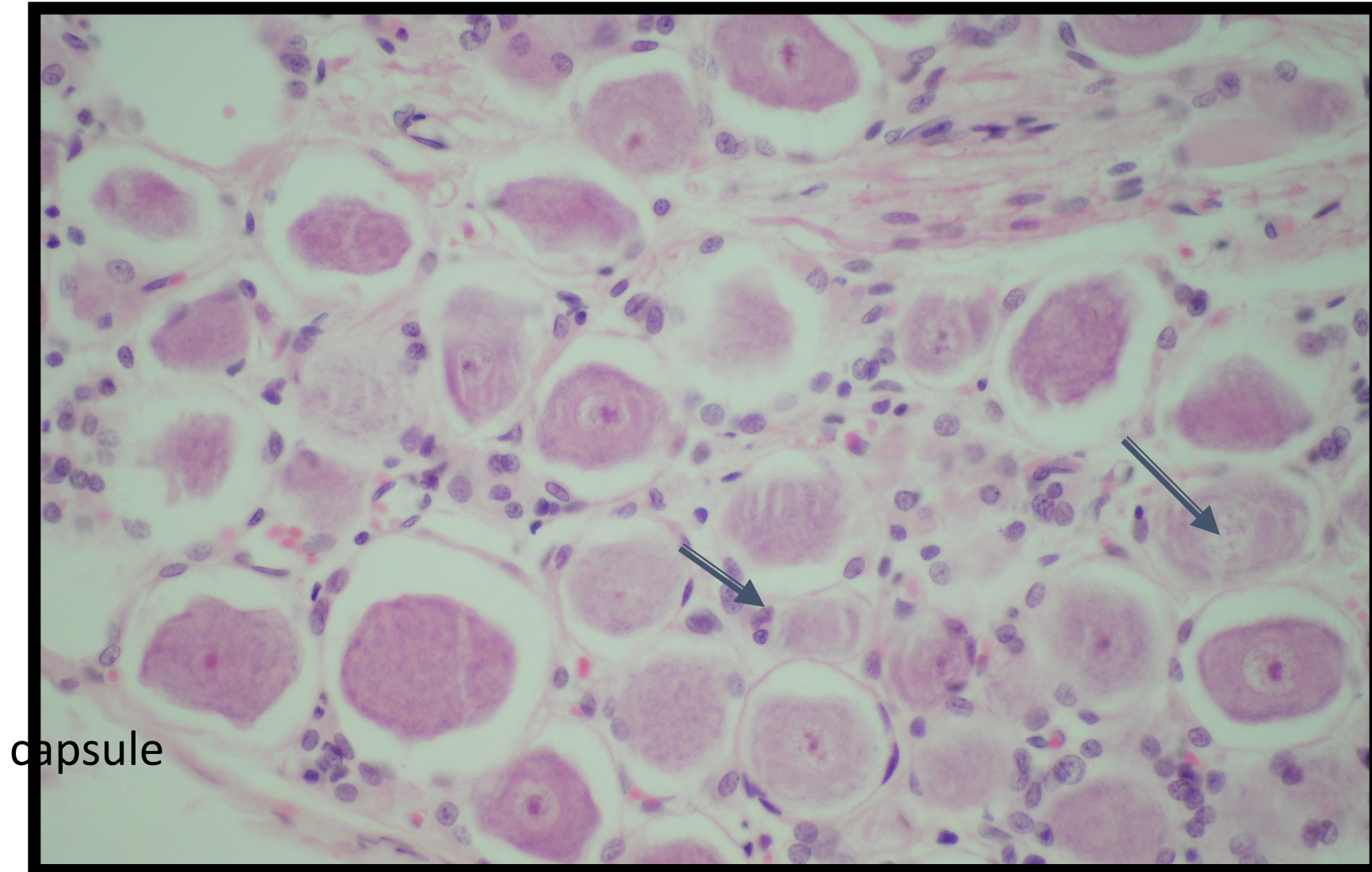
Central canal-spinal cord



Spinal (dorsal) root ganglia

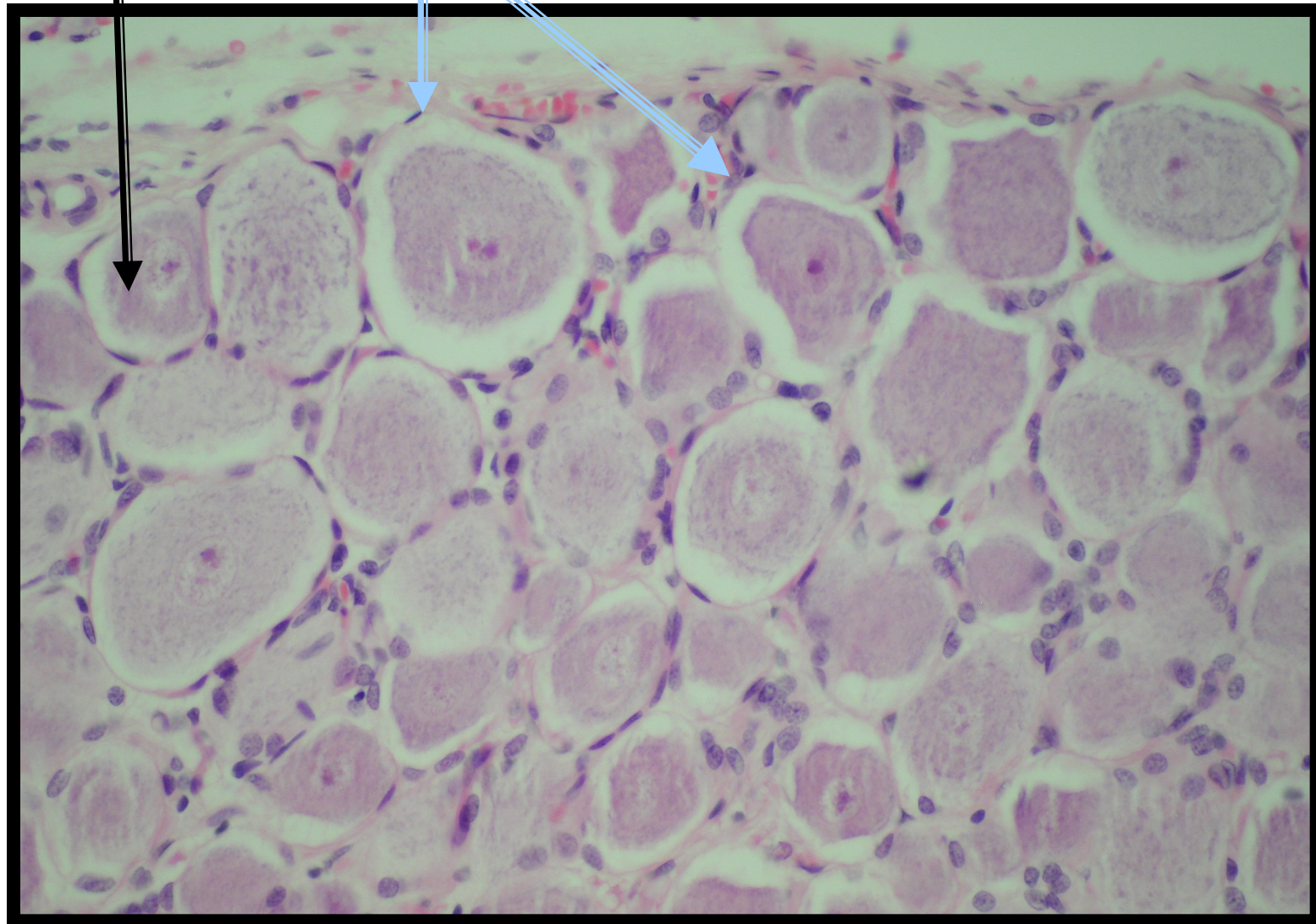


Sensory ganglion.
: neuronal cell bodies

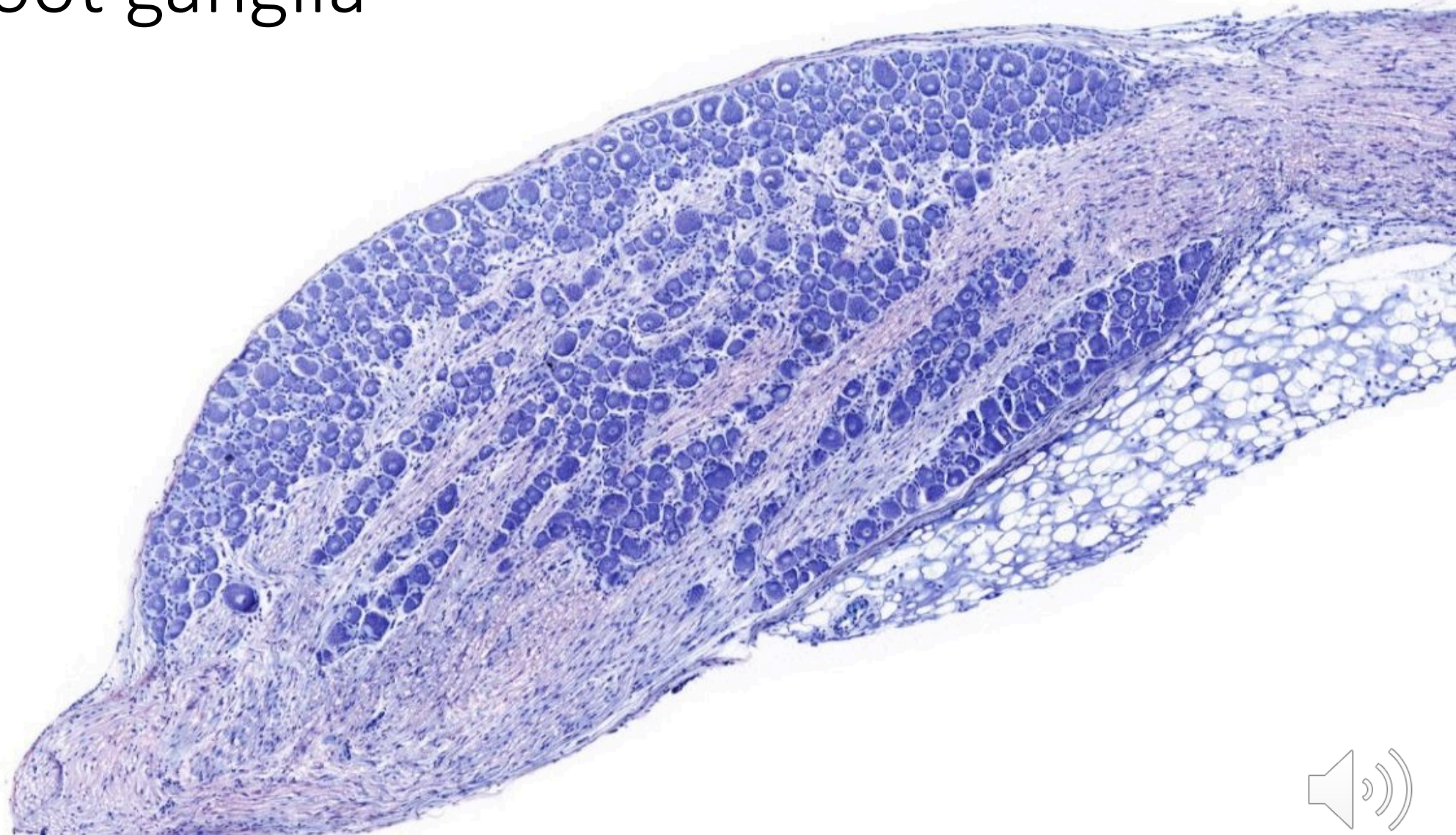


cell bodies

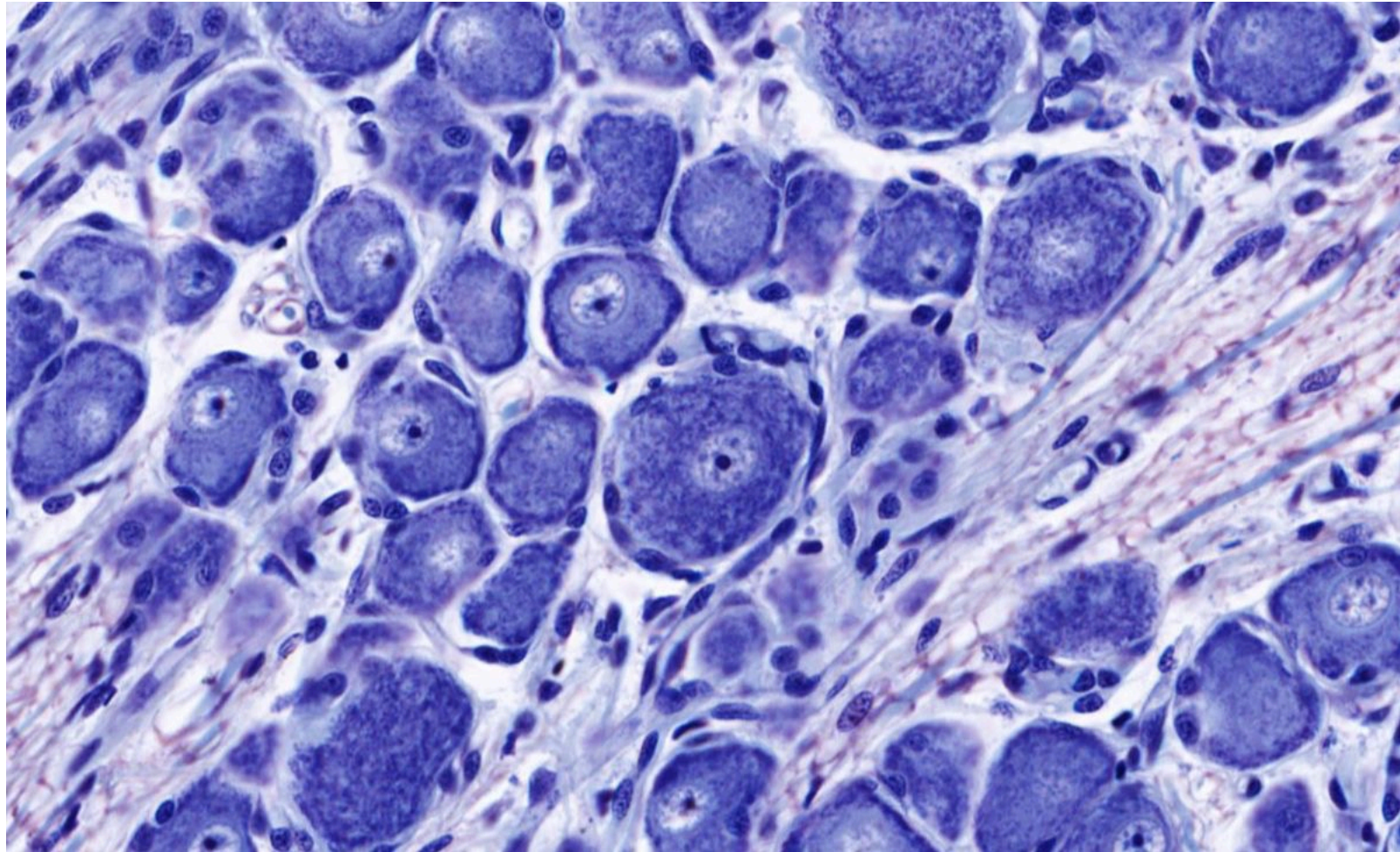
satellite cells



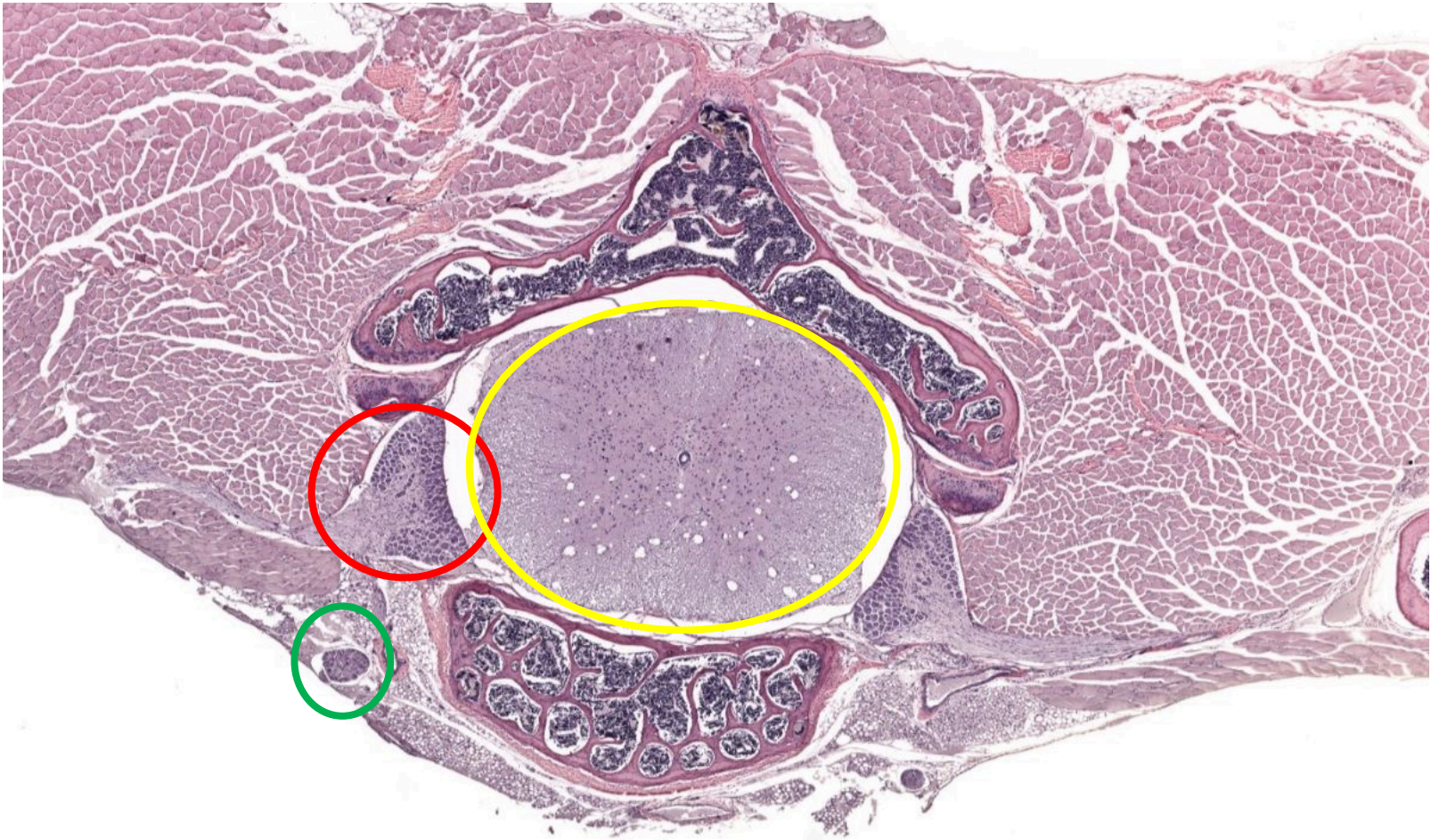
Dorsal root ganglia



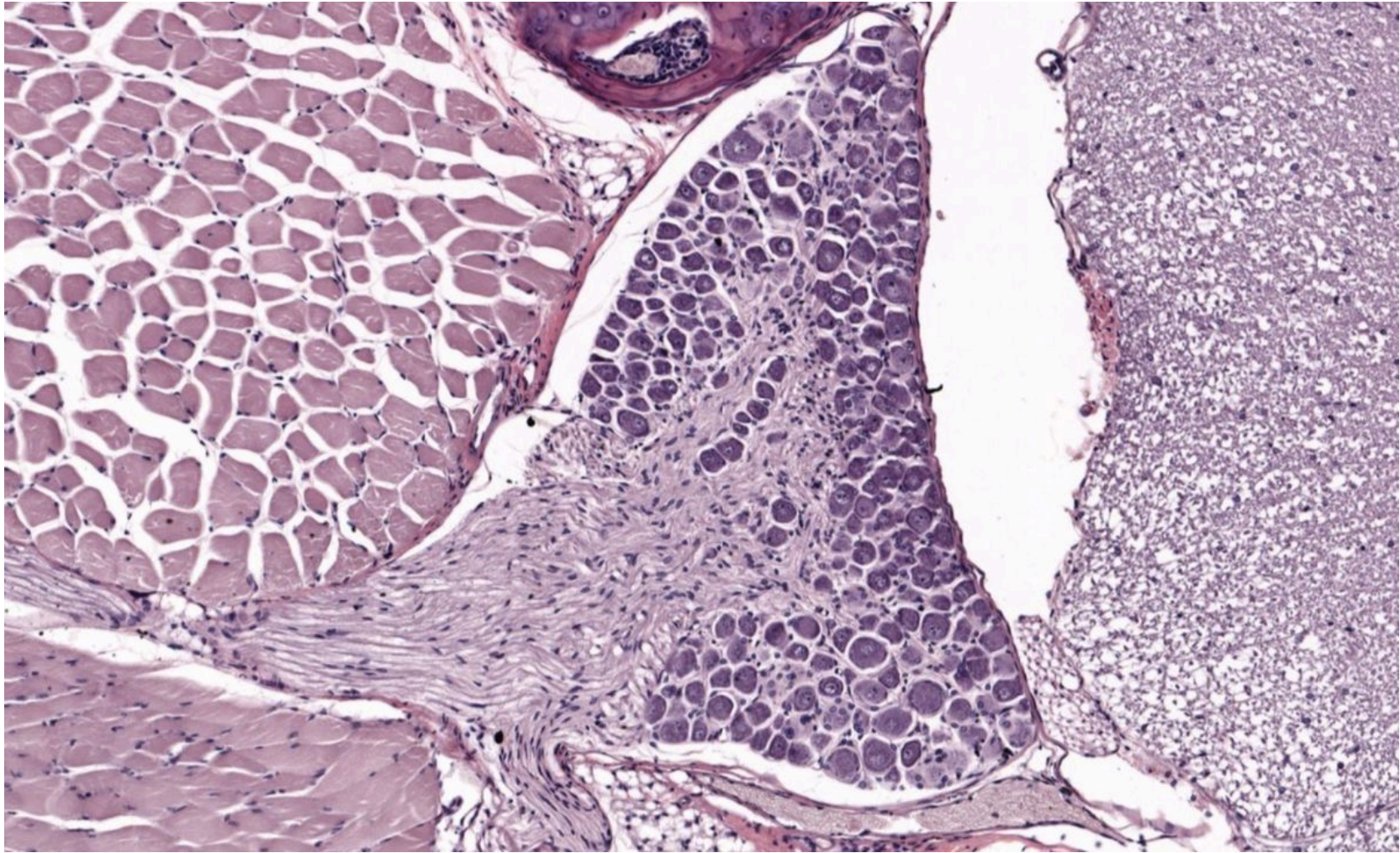
Dorsal root ganglia



Spinal cord



!!!!



Autonomiv ganglia

